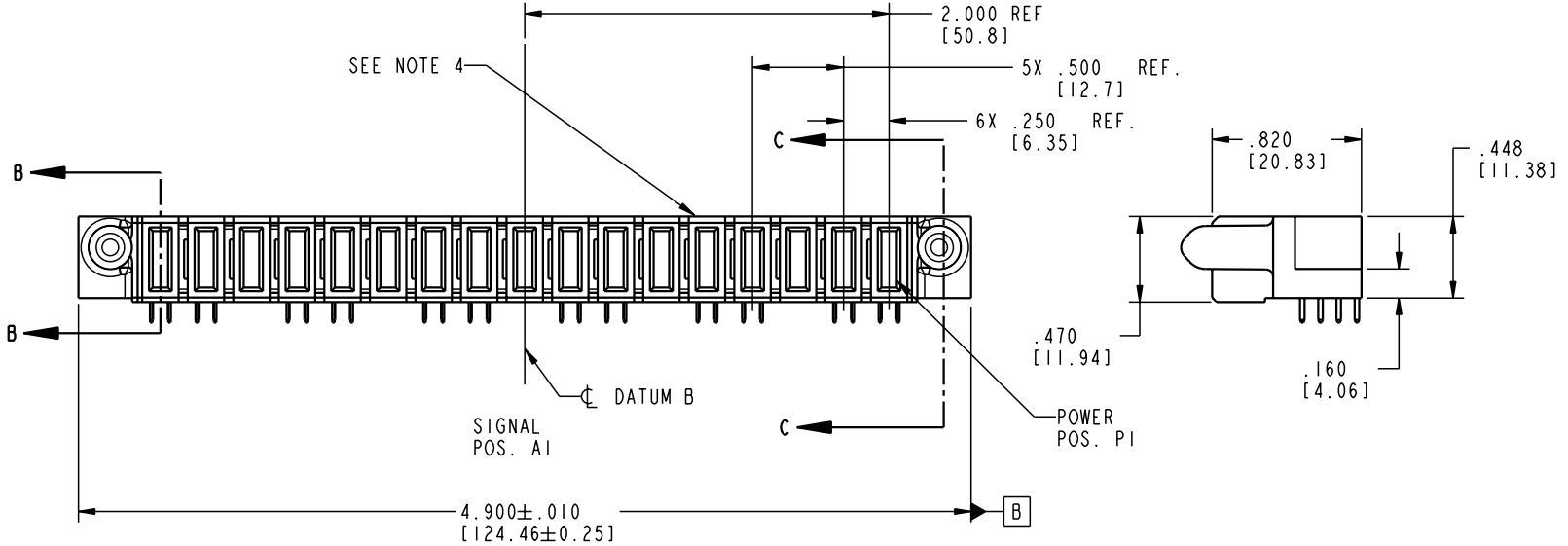
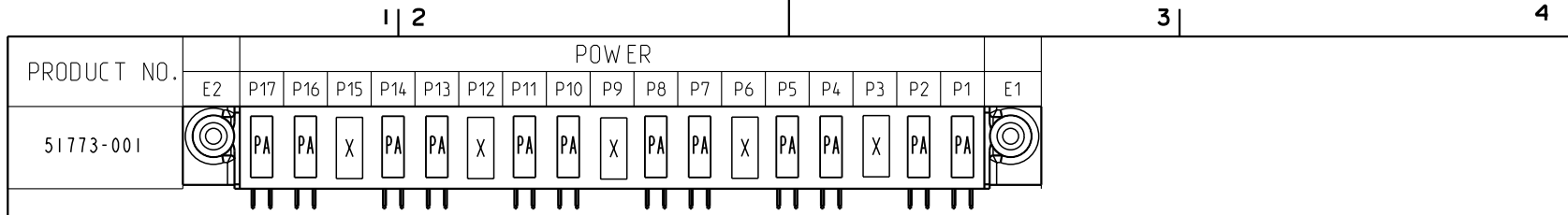


Tous droits strictement réservés. Reproduction ou communication a des tiers interdite sous quelque forme que ce soit sans autorisation écrite du propriétaire. Propriete de c FCI. Droits de reproduction FCI.

All rights strictly reserved. Reproduction or issue to third parties in any form whatever is not permitted without written authority from the proprietor. Property of FCI. Copyright FCI.



| CODE | DIM "M" MATING LENGTH | CONTACT TYPE |
|------|-----------------------|--------------|
| PA   | .042 [1.07]           | POWER        |
| X    | OMITTED               | OMITTED      |

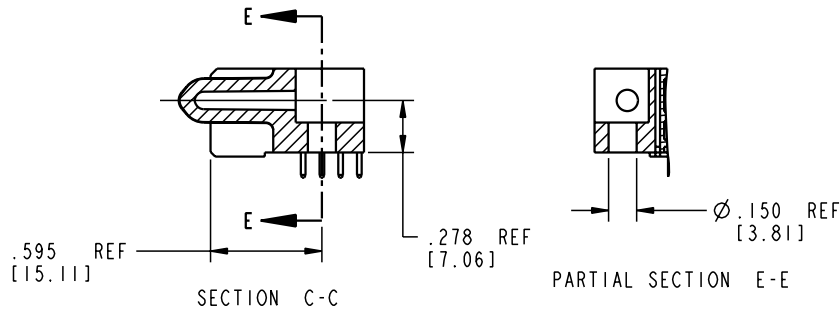
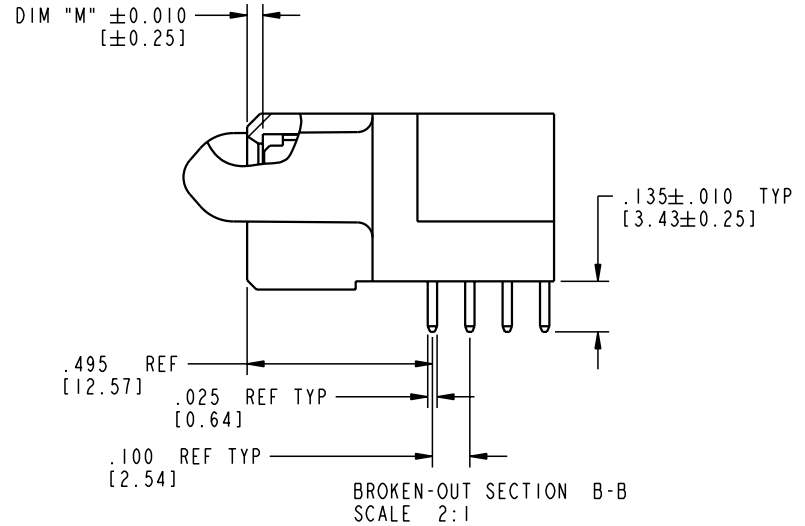
|             |                |     |          |            |                           |                                       |         |          |                       |                        |        |
|-------------|----------------|-----|----------|------------|---------------------------|---------------------------------------|---------|----------|-----------------------|------------------------|--------|
| mat'l code  |                |     |          | SEE NOTE 2 |                           | tolerances unless otherwise specified |         | CUSTOMER |                       | <br>www.fciconnect.com |        |
| lfr         | ecr no.        | dr  | date     | linear     | XX ± .01/0.X ± 0.3        | projection                            | COPY    |          | title                 |                        |        |
| A           | V21912         | MEM | 12/30/02 | angles     | .XXX ± .005/0.XX ± 0.13   |                                       | A       |          | 17P                   |                        |        |
|             |                |     |          | dr         | .XXX ± .002/0.XXX ± 0.051 |                                       | INCH/MM |          | R/A SOLDER RECEPTACLE |                        |        |
|             |                |     |          | enr        | 0° ± 2°                   | scale                                 | 1:1     |          | product family        |                        | code   |
|             |                |     |          | chr        | M. MOSTOLLER 12/30/02     |                                       | A       |          | PwrBlade              |                        | 213    |
|             |                |     |          | appd       | M. MOSTOLLER 12/30/02     |                                       | A       |          | size                  |                        | sheet  |
|             |                |     |          |            |                           |                                       | A       |          | 51773-001             |                        | 1 of 4 |
| sheet index | revision sheet | A   | A        | A          | A                         |                                       |         |          |                       |                        |        |
| 1           | 2              | 3   | 4        |            |                           |                                       |         |          |                       |                        |        |

Pro/E 3 cage code 22526 4

Tous droits strictement reserves. Reproduction ou communication a des tiers interdite sous quelque forme que ce soit sans autorisation ecrite du proprietaire. Propriete de c FCI. Droits de reproduction FCI.

All rights strictly reserved. Reproduction or issue to third parties in any form whatever is not permitted without written authority from the proprietor. Property of FCI. Copyright FCI.

PRODUCT NUMBER  
51773-001



|             |         |                |      |            |  |                                       |      |                |                              |                        |        |
|-------------|---------|----------------|------|------------|--|---------------------------------------|------|----------------|------------------------------|------------------------|--------|
| mat'l code  |         |                |      | SEE NOTE 2 |  | tolerances unless otherwise specified |      | CUSTOMER       |                              | <br>www.fciconnect.com |        |
| lfr         | ecn no. | dr             | date | linear     | $XX \pm .01 / 0.X \pm 0.3$<br>$XXX \pm .005 / 0.XX \pm 0.13$<br>$XXXX \pm .0020 / 0.XXX \pm 0.051$ | projection                            | COPY |                | title                        |                        |        |
| A           |         |                |      | angles     | $0^\circ \pm 2^\circ$  |                                       |      |                | 17P<br>R/A SOLDER RECEPTACLE |                        |        |
|             |         |                |      | dr         | M. MOSTOLLER 12/30/02  |                                       |      | product family |                              | PwrBlade               | code   |
|             |         |                |      | enr        | M. MOSTOLLER 12/30/02  | scale                                 |      | size           |                              | dwg no                 | 213    |
|             |         |                |      | chr        | H. BREWBAKER 12/30/02  | 1:1                                   |      | A              |                              | 51773-001              | sheet  |
|             |         |                |      | appd       | M. MOSTOLLER 12/30/02  |                                       |      |                |                              |                        | 2 of 4 |
| sheet index |         | revision sheet |      |            |  |                                       |      |                |                              |                        |        |

Pro/E

cage code 22526

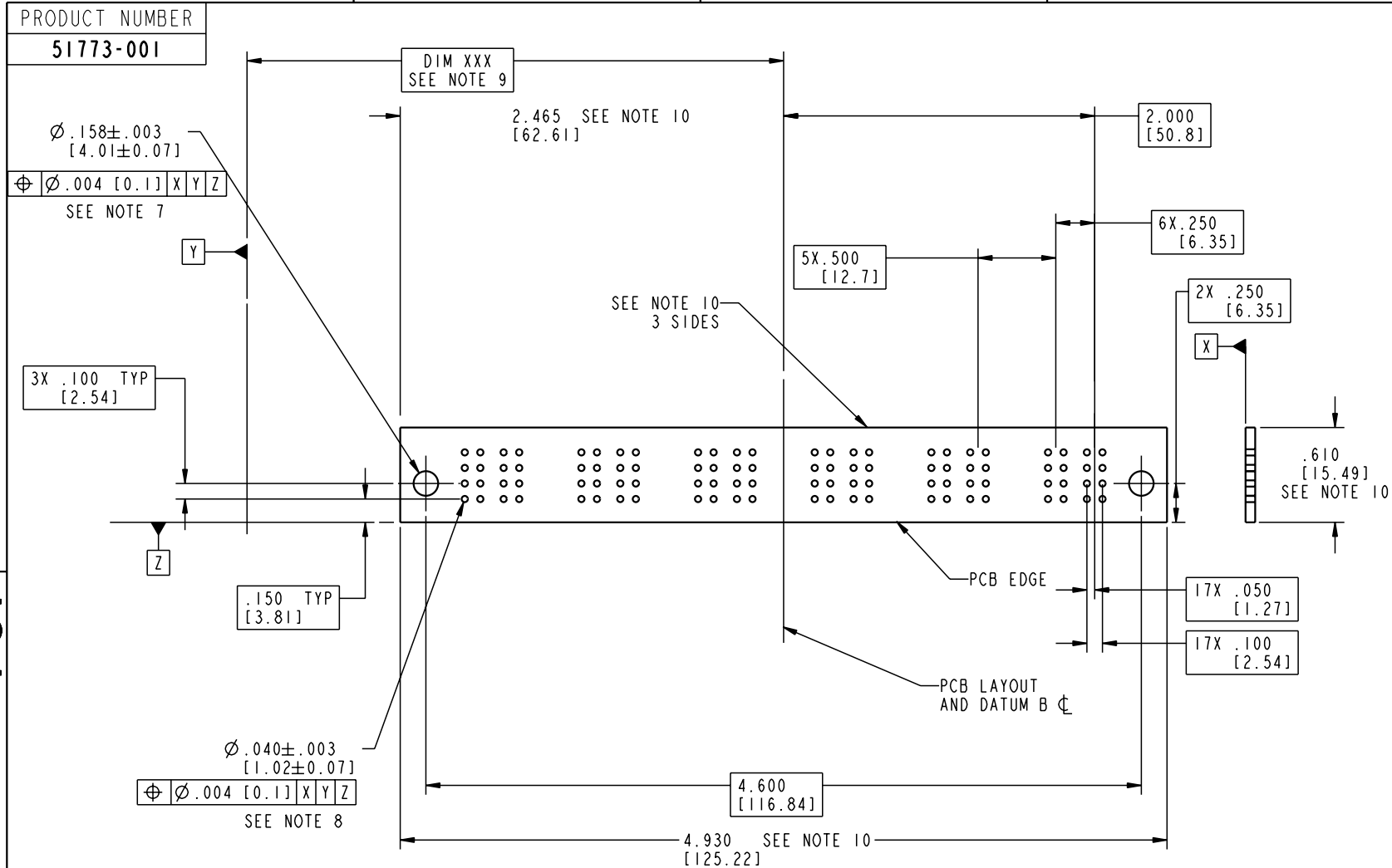
PDM: Rev:A

STATUS: Released

Printed: Aug 14, 2007

Tous droits strictement réservés. Reproduction ou communication a des tiers interdite sous quelque forme que ce soit sans autorisation écrite du propriétaire. Propriété de c FCI. Droits de reproduction FCI.

All rights strictly reserved. Reproduction or issue to third parties in any form whatever is not permitted without written authority from the proprietor. Property of FCI. Copyright FCI.



|             |                |            |      |                                       |  |                          |                |                        |        |
|-------------|----------------|------------|------|---------------------------------------|--|--------------------------|----------------|------------------------|--------|
| mat'l code  |                | SEE NOTE 2 |      | tolerances unless otherwise specified |  | CUSTOMER                 |                | <br>www.fciconnect.com |        |
| lfr         | ecr no.        | dr         | date | linear                                | $XX \pm .01 / 0.X \pm 0.3$<br>$XXX \pm .005 / 0.XX \pm 0.13$<br>$.XXX \pm .0020 / 0.XXX \pm 0.051$ | projection               | title          |                        |        |
| A           |                |            |      | angles                                | $0^\circ \pm 2^\circ$  |                          | I7P            |                        |        |
|             |                |            |      | dr                                    | M. MOSTOLLER 12/30/02  | <br>INCH/MM<br>scale 1:1 | product family |                        | code   |
|             |                |            |      | enr                                   | M. MOSTOLLER 12/30/02  |                          | PwrBlade       |                        | 213    |
|             |                |            |      | chr                                   | H. BREWBAKER 12/30/02  |                          | size           | dwg no                 | sheet  |
|             |                |            |      | appd                                  | M. MOSTOLLER 12/30/02  |                          | A              | 51773-001              | 3 of 4 |
| sheet index | revision sheet |            |      |                                       |  |                          | cage code      | 22526                  |        |

Pro/E

PDM: Rev:A

STATUS: Released

Printed: Aug 14, 2007

Tous droits strictement réservés. Reproduction ou communication a des tiers interdite sous quelque forme que ce soit sans autorisation écrite du propriétaire. Propriété de c FCI. Droits de reproduction FCI.

All rights strictly reserved. Reproduction or issue to third parties in any form whatever is not permitted without written authority from the proprietor. Property of FCI. Copyright FCI.

1 | 2

3 |

4

PRODUCT NUMBER

51773-001

NOTES:

1. DIMENSIONS AND TOLERANCES ARE IN ACCORDANCE WITH ASME Y14.5M, 1994 UNLESS OTHERWISE SPECIFIED.

CONNECTOR NOTES:

- 2. HOUSING MATERIAL: UL 94 V-0 GLASS FILLED  
HIGH-TEMP THERMOPLASTIC  
POWER CONTACT MATERIAL: COPPER ALLOY  
SIGNAL PIN MATERIAL: COPPER ALLOY
  - 3. PLATING:  
SIGNAL PINS: 30u"/0.76um Au OVER 50u"/1.27um Ni  
POWER CONTACTS: 50u"/1.27um Ni UNDER ALL  
WITH 30u"/0.76um Au ON CONTACT AREA  
AND SnPb ON PCB INTERFACE
  - 4. MANUFACTURER'S NAME, P/N, AND DATE CODE TO APPEAR ON THIS SURFACE.
  - 5. PRODUCT SPECIFICATION GS-12-149.  
APPLICATION SPECIFICATION BUS-20-067.  
PACKAGED IN TRAYS.)
- PCB NOTES:
- 6. ALL HOLE DIAMETERS ARE FINISHED HOLE SIZE.
  - 7. MOUNTING HOLES, WHERE APPLICABLE, ARE UNPLATED.
  - 8.  $\varnothing .0453 \pm .0010$  [1.151  $\pm$  0.025] DRILLED HOLES PLATED WITH .0003 [0.008] MIN SnPb OVER .001 [0.03] TO .003 [0.08] Cu PLATING TO ACHIEVE  $\varnothing .040 \pm .003$  [1.02  $\pm$  .07] HOLE.
  - 9. "DIM XXX" TO BE DETERMINED BY THE CUSTOMER.
  - 10. CONNECTOR KEEP-OUT ZONE.

A

A



B

B

|             |                |            |                       |                                       |   |                |             |                       |        |
|-------------|----------------|------------|-----------------------|---------------------------------------|---|----------------|-------------|-----------------------|--------|
| mat'l code  |                | SEE NOTE 2 |                       | tolerances unless otherwise specified |   | CUSTOMER       |             | www.fciconnect.com    |        |
| lfr         | ecr no.        | dr         | date                  | linear                                | $XX \pm .01 / 0.X \pm 0.3$<br>$.XXX \pm .005 / 0.XX \pm 0.13$<br>$.XXX \pm .0020 / 0.XXX \pm 0.051$ | projection     |             | title                 | 17P    |
| A           |                |            |                       | angles                                | $0^\circ \pm 2^\circ$   |                |             | R/A SOLDER RECEPTACLE |        |
|             |                | dr         | M. MOSTOLLER 12/30/02 |                                       |   | product family | PwrBlade    | code                  | 213    |
|             |                | enr        | M. MOSTOLLER 12/30/02 |                                       |   | size           | dwg no      | sheet                 | 4 of 4 |
|             |                | chr        | H. BREWBAKER 12/30/02 |                                       |   | scale          | A 51773-001 |                       |        |
|             |                | appd       | M. MOSTOLLER 12/30/02 |                                       |   | 1:1            |             |                       |        |
| sheet index | revision sheet |            |                       |                                       |   |                |             |                       |        |

1 | 2

Pro/E

3 |

cage code 22526

4

PDM: Rev:A

STATUS: Released

Printed: Aug 14, 2007